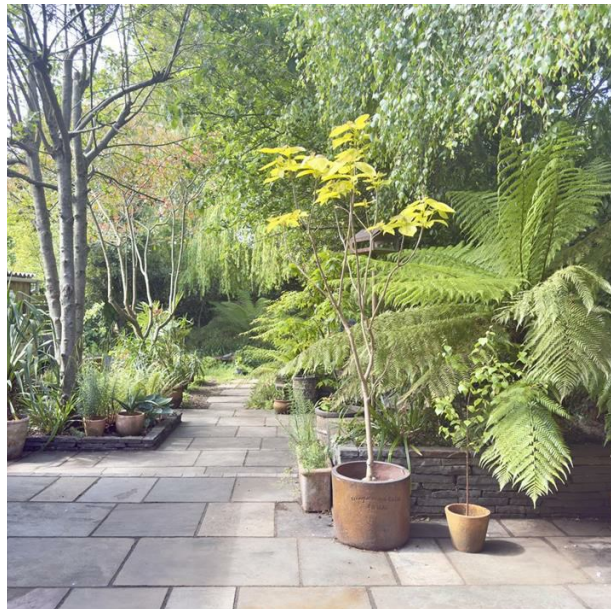


21 Victoria Road



4 Andrews Buildings
Stanwell Road
Penarth CF64 2AA

All enquiries: 029 2070 7999
Sales and general enquiries: info@shepherdsharpe.com
Lettings enquiries: lettings@shepherdsharpe.com

Monday – Friday
9am – 5.30pm
Saturday
9am – 5pm

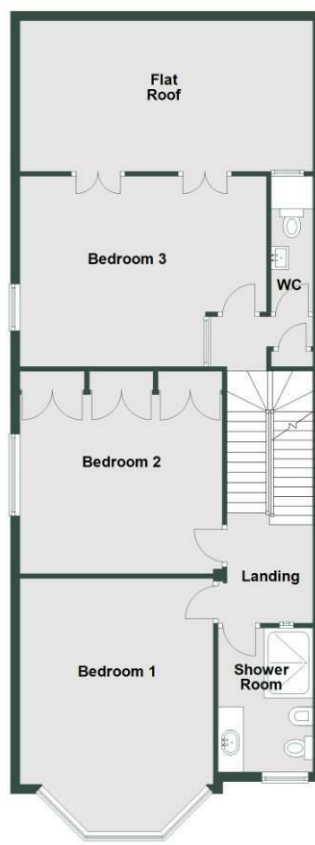
SHEPHERD SHARPE



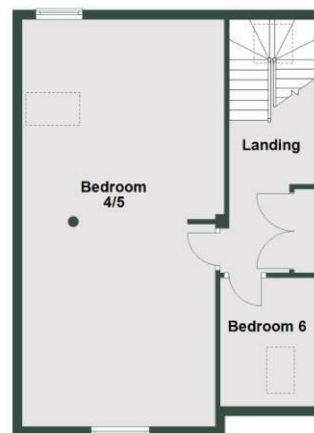
Ground Floor



First Floor



Second Floor



Total area: approx. 278.1 sq. metres (2993.3 sq. feet)
21 Victoria Road

21 Victoria Road

Penarth CF64 3EG

£950,000

A substantial three storey six bedroom stone end terrace Victorian house situated in a convenient central location. The property is found in an established leafy road in catchment for Victoria and Stanwell schools. Comprises porch, hallway, two reception rooms, extended kitchen/dining with utility area and bathroom to ground floor, three double bedrooms, separate wc and shower room to first floor, two double bedrooms currently one large space and single room to second floor. Off road parking for two plus cars, garage, front garden and mature private rear garden. Gas central heating (Worcester boiler installed 2024). Freehold.

Energy Efficiency Rating	
Current	Potential
Very energy efficient - lower running costs	
92 plus) A	
81-91) B	
69-80) C	
55-68) D	
39-54) E	
21-38) F	
1-20) G	
Not energy efficient - higher running costs	
60	81
EU Directive 2002/91/EC	
England & Wales	

21 Victoria Road



21 Victoria Road





Original panelled front door to porch.

Porch

Tiled floor, cornice, part panelled leaded inner door with original stained glass windows to either side.

Hallway

Original cornice and architrave, traditional balustrade to first floor, vinyl floor, radiator. Original stripped panelled doors to all ground floor rooms.

Reception Room 1

5.54m x 4.65m (18'2" x 15'3")

Double glazed aluminium bay window to front. Original stripped flooring, picture rail, cornice and rose, three contemporary stainless steel radiators.

Reception Room 2

4.35m x 4.48m (14'3" x 14'8")

Currently used as an office. Large double glazed window to side, sliding door to kitchen. Built-in shelving and desks in a contemporary style, wooden floor, radiator.

Kitchen/Dining

6.17m x 4.70m (20'2" x 15'5")

Extended and a great family space. Contemporary double glazed powder coated sliding doors leading to rear garden. The kitchen is finished in grey with flat fronted units, wood work tops, sink and drainer. Range cooker, space for fridge/freezer, dishwasher, space for large table and chairs, two radiators, panelled door to pantry.

This open plan space with zoned area/utility with sink and drainer, plumbing for washing machine and tumble dryer. Easy access to ground floor bathroom which could be a separate utility.

Bathroom

3.00m x 1.86m (9'10" x 6'1")

Panelled bath with shower over, contemporary wash basin with mixer tap and wc, all in white. Door to garage.

First Floor Landing

Two tier landing, traditional balustrade, carpet, radiator, shelved linen cupboard. Potential at the rear of the property to create another bathroom.

Bedroom 1

5.52m x 4.16m (18'1" x 13'7")

Double glazed broad bay window to front. Carpet, radiator, picture rail, cornice.

Bedroom 2

3.66m x 4.44m (12'0" x 14'6")

Sash window to side. Carpet, contemporary fitted wardrobes, radiator, picture rail, cornice, Worcester boiler (installed in 2024), separate insulated tank with controls for heating and water.

Bedroom 3

3.34m x 5.46m (10'11" x 17'10")

Double glazed side window, two sets of French doors leading out to rear deck (informal but with the potential to create a large roof terrace). Carpet, radiator, tiled fireplace.

W.C.

Contemporary wash basin with mixer tap, twin flush wc with concealed plumbing.

Bathroom

2.88m x 1.85m (9'5" x 6'0")

A contemporary shower room. Comprising wet room area with rubberised floor, floor to ceiling glass enclosure, contemporary wall hung bidet and wc, circular wash basin with column lever mixer tap. Shaver point, recessed down lighting, extractor, chrome towel rail and stainless steel finish radiator. Double glazed window to front.

Second Floor Landing

Large linen cupboard, skylight window to rear, carpet.

Bedroom 4/5

8.75m x 4.09m (28'8" x 13'5")

Two rooms currently knocked through now a very large bedroom. Sash window to front and rear, large velux skylight to one side. If reinstated the bedrooms would measure Bedroom 5 4.44m x 4.27m and Bedroom 4 4.08m x 4.35m.

Bedroom 6

3.07m x 2.19m (10'0" x 7'2")

Velux window to front, carpet.

Front Garden

The property is set back from the road with off road parking to the side and front. Attractive mature planting, access to garage.

Garage

8.25 x 2.87 (27'0" x 9'4")

Timber doors to front, contemporary sliding double doors and screen leading out to garden.

Rear Garden

Private rear garden with mature planting, large patio/entertaining area, lawn, BBQ area, several mature trees.

Council Tax

Band G £3,768.63 p.a. (26/27)

Post Code

CF64 3EG

21 Victoria Road



21 Victoria Road

